

2013



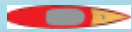
 **HOBIE**  
STAND UP PADDLEBOARDS

## 12.6/14.0 E-SERIES

Hobie's E-Series boards have been developed by Hobie's world class water athletes and R & D team. Utilizing computer aided shaping technology and countless hours of on the water testing and racing, we have been able to zero in on critical performance factors in the perfection of our designs. E-Series boards were developed to be fast in all conditions, have a stable confident feeling on the water, and maintain momentum in between strokes and paddle changes.



### Series Colors



T:Red Bamboo  
B:Red



T:Aqua Bamboo  
B:Aqua



T:Arctic White  
B:Arctic White



T:Aqua  
B:Aqua



**E-SERIES**  
14'



**E-SERIES**  
12'6"



**E-SERIES**  
FLATWATER 12'6"



**CM TORQUE**  
9'4"



**CM TORQUE**  
8'11"

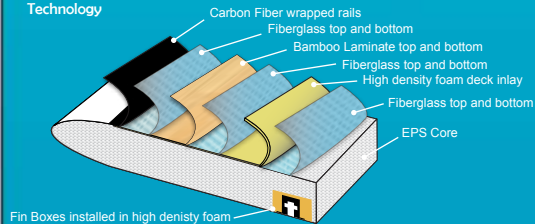


**CM TORQUE**  
8'4"



	14'	12'6"	12'6"	9'4"	8'11"	8'4"
Length	14' (427cm)	12'6" (381cm)	12'6" (381cm)	9'4" (284.4cm)	8'11" 271.8cm	8'4" 254cm
Width	29" (73.66cm)	28.875" (73.88cm)	27.58" (70.05cm)	28.75" (72.4cm)	28.875" 72.4cm	28.5" 72.4cm
Thick	6.6" (16.76cm)	6.6" (16.76cm)	5.4" (13.72cm)	4.5" (11.4cm)	4.3" 10.92cm	4.3" 10.92cm
Volume	285.7L	249L	204.7L	131.1L	120.5L	110.5L
Weight *approximate	28lb (12.7kg)	24.5lb (11.1kg)	23.5lb (10.7kg)	19lb (8.6kg)	17lb 7.7kg	16lb 7.3kg
Color *shown	• Aqua*, • Aqua Bamboo • Arctic White, • Red Bamboo	• Aqua, • Aqua Bamboo • Arctic White, • Red Bamboo*	• Blue Dart	Green/Carbon* Orange/Carbon	• Green/Carbon • Orange/Carbon	Green/Carbon Orange/Carbon

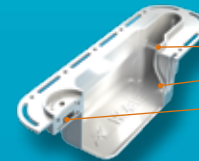
### Bamboo Composite Epoxy + Carbon Technology



### Series Features

- Built in hand hold
- 2Wayv Vent
- Leash Plug
- EVA Pad
- Race Fin

### HOBIE INTEGRATED HANDLE



- 3 in 1 Design
- Integrated Security Bar for locks
- Ergonomic Hand Hold
- 2Wayv Vent

**2 Way V - Venting System**  
A unique hassle free two-way vent system that equalizes pressure due to temperature or altitude variation.

### Series Features

- Built in hand hold
- 2Wayv Vent
- EVA traction pad
- Future Side Fins
- Center fin
- Leash Plug

## SUP RAW SERIES

HOBIE SUP RAW represents a high quality, high performance SUP board priced competitively and MADE IN THE USA! No Gimmicks, no smoke and mirrors just the RAW Essentials! The combination of Hobie's cutting edge design and CLK construction results in the most responsive high performance board on the market today!



RAW RACE  
14'



RAW RACE  
12'6"



RAW RACE  
FLATWATER 12'6"

	RAW RACE 14'	RAW RACE 12'6"	RAW RACE FLATWATER 12'6"	CM RAW LB 10'6"	CM RAW LB 9'8"	CM RAW LB 9'	CM RAW 9'4"	CM RAW 8'11"	CM RAW 8'4"	CM RAW 7'11"
Length	14' (427cm)	12'6" (381cm)	12'6" (381cm)	10'6" (320cm)	9'8" (294.6cm)	9' (274.3cm)	9'4" (284.4cm)	8'11" (271.8cm)	8'4" (254cm)	7'11" (241.3cm)
Width	29" (73.66cm)	28.875" (73.88cm)	27.58" (70.05cm)	30" (76.2cm)	29.5" (74.9cm)	30" (76.2cm)	28.75" (73.03cm)	28.75" (73.03cm)	28.5" (72.4cm)	28.5" (72.4cm)
Thick	6.6" (16.76cm)	6.6" (16.76cm)	5.4" (13.72cm)	4.75" (12.06cm)	4.75" (12.06cm)	4.5" (11.43cm)	4.5" (11.43cm)	4.3" (10.92cm)	4.3" (10.92cm)	4.25" (10.79cm)
Volume	285.7L	249L	204.7L	168.6L	151.2L	137.2L	131.1L	120.5L	110.5L	101.1L
Weight *approximate	24.5lb (11.1kg)	22lb (10kg)	22lb (10kg)	19lb (8.6kg)	18lb (8.2kg)	15lb (6.8kg)	16lb (7.3kg)	14lb (6.4kg)	12.5lb (5.7kg)	12lb (5.4kg)



### Cross Link Hybrid Composite Lamination

Hobie introduces CLK Lamination to its line of RAW RACE and SUP RAW models. The CLK Lamination technique as it applies to SUPs has been perfected by the master laminators at our Hobie Glass Shop, and utilizes space age cross link hybrid laminating technology to produce a light weight, high quality, and high performance stand up paddleboards.

### Series Features

- Built in hand hold
- 2Wayv Vent
- Leash Plug
- EVA Pad
- Race Fin

## CM RAW SERIES

Inspired by 3x Longboard World Champion and World Class SUP surfer Colin McPhillips; CM RAW boards are very stable, fast to paddle and catch waves with ease and absolutely rip in a variety of surf SUP conditions!



CM RAW LB SERIES



CM RAW LB  
10'6"



CM RAW LB  
9'8"



CM RAW LB  
9'

CM RAW SERIES



CM RAW  
9'4"



CM RAW  
8'11"



CM RAW  
8'4"



CM RAW  
7'11"

### HOBIE INTEGRATED HANDLE



- 3 in 1 Design
- Integrated Security Bar for locks
- Ergonomic Hand Hold
- 2Wayv Vent



### 2 Way V - Venting System

A unique hassle free two-way vent system that equalizes pressure due to temperature or altitude variation.

### Series Features

- Unidirectional Carbon Cloth Stringers Top & Bottom
- Hand Hold
- 2Wayv Vent
- Future Side Fins
- Leash Plug
- Padded or Non - Padded Option
- Center fin



## INFLATABLE SERIES

Incorporating all the same technical design aspects from the rest of the Hobie SUP line, The Hobie Inflatable Series makes stand up paddling easy, fun, and portable. Perfect for families or travelers on the go, the entire Hobie Inflatable Series stores neatly and compact, and can be ready to go in a matter of minutes.



**TOUR**  
12'6



**TOUR**  
10'6



**ADVENTURE**  
10'8



**FITNESS**  
10'8



**ATR**  
10'8



**DRIFTER**  
10



**GROM**  
8'6



**RIVER**  
10'2

Length	12'6" (381cm)	10'6" (320cm)	10'8" (330cm)	10'8" (330cm)	10'8" (310cm)	10' (305cm)	8'6" (297.2cm)	11'2" (310 cm)
Width	32" (81.3cm)	32" (81.3cm)	32" (81.3cm)	32" (81.3cm)	32" (81.3cm)	32" (81.3cm)	30" (76.20cm)	33" (83.82 cm)
Thick	5.75" (14.6cm)	5.75" (14.6cm)	5.75" (14.6cm)	4.25" (10.79cm)	4.25" (10.79cm)	4.25" (10.79cm)	4.25" (10.79 cm)	4.25" (10.79 cm)
Volume	298.2L	245.9L	272.5L	272.5L	208L	193.3L	148.8 L	196 L
Weight *approximate	28lb (12.7kg)	27lb (12.2kg)	27lb (12.2kg)	27lb (12.2kg)	28lb (12.7kg)	23lb (10.4kg)	20lb (9.1kg)	28 lb (12.7 kg)
Color	• Black	• Black	• Black	• Seafoam	• Black	• Black and Seafoam	• White	• Black

### Series Accessories



Heavy duty  
backpack  
storage bag



EXP - 3 Piece Paddle  
\*optional



Pump w/ gauge



Repair Kit



Dry Bag  
\*optional



Electric Pump  
\*optional

### Series Features

- Hi-Tech drop-stitch construction allowing inflation over 10 PSI for extreme rigidity
- High pressure spring valve for quick and easy inflation and deflation
- Large EVA foot pad provides grip and comfort
- Built in convenient carry handle and 4 built in utility handles
- Removable center fin & tri fin on some models
- Stainless steel D-rings for tying off to boats, docks, etc
- Bungee tie down system (*not on all models*)





## ATRII SERIES

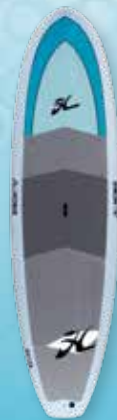
Incorporating over 6 years of SUP building knowledge, the next evolution of the highly popular ATR Series, the ATRII incorporates all the great characteristics of the first series with a much more active approach.



ATR II  
12'2



ATR II  
11'



ATR II  
10'

Length	12'2 (370.8cm)	11' (81.28cm)	10' (12.32cm)	12'4" (376cm)	10'4" (315cm)	10'6" (320cm)	9'8" (294.6)	9' (274.3cm)
Width	32" (81.28cm)	31.5" (80cm)	32" (81.28cm)	30" (76.2cm)	30" (76.2cm)	30" (76.2cm)	30" (76.2cm)	30" (76.2cm)
Thick	4.85" (12.32cm)	4.98" (12.65cm)	4.75" (12.07cm)	5.4" (16.76cm)	4.85" (16.76cm)	4.75" (12.07)	4.75" (12.07cm)	4.5" (11.43cm)
Volume	238.5L	206.8L	181.1L	247.5L	192.5L	168.6L	151.2L	137.2L
Weight *approximate	29lb (13.2kg)	26lb (11.8kg)	25lb (11.3kg)	25lb (11.3kg)	24lb (10.9kg)	22lb (10kg)	20lb (9kg)	18lb (8.2kg)
Color *shown	• Red Bamboo * • Aqua	• Aqua Bamboo * • Aqua	• Aqua Bamboo • Aqua *	• Red Bamboo • Aqua *	• Red Bamboo * • Aqua	• Blue Bamboo • Blue *	• Blue Bamboo * • Blue	• Blue Bamboo • Blue *

## VENTURE SERIES

A true multi use board, this versatile design fuses distance, touring, and surf features. The result is a go any wear do anything board perfect for both ocean and lake excursions.



VENTURE  
12'4



VENTURE  
10'4

## CM LB SERIES

Featuring contours similar to the Torque Series, the CM LB Series features a high performance bottom and rails with a more fuller outline, perfect for the larger advanced surf paddler or someone looking for a smaller recreational board.



CM LB  
10'6

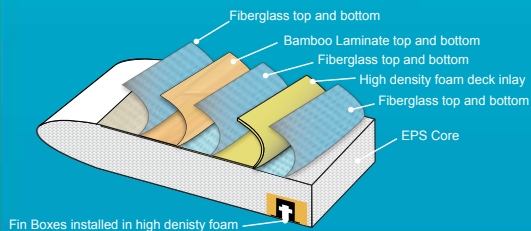


CM LB  
9'8



CM LB  
9'

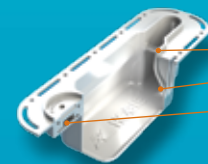
## Bamboo Composite Epoxy Technology



## Features

- BCX - Bamboo Epoxy Construction
- Hand Hold
- 2Wayv Vent
- Leash Plug
- 3/4 length EVA pad

## HOBIE INTEGRATED HANDLE



- 3 in 1 Design
- Integrated Security Bar for locks
- Ergonomic Hand Hold
- 2Wayv Vent



## 2 Way V - Venting System

A unique hassle free two-way vent system that equalizes pressure due to temperature or altitude variation.

# PADDLES

# ACCESSORIES

	PRO CARBON SERIES		RECREATION SERIES		
					
Length	86" Max (218cm)	86" Max (218cm)	86"Max (218cm)	70"-82" (178-208cm)	65"-80" (165-203cm) <i>*collapses to 30"</i>
Material	Carbon	Carbon Fiberglass	Fiberglass	Fiberglass	Fiberglass
Blade Width	8.5" (21.6cm)	7.8" (19.8cm)	7.5" (19cm)	7.5" (19cm)	7.5" (19cm)
Weight	16.9 oz /@ 78" 479 g	19.75 oz /@ 78" 558 g	28.75 oz /@ 78" 815 g	32.55 oz 923 g	33.02 oz 939 g

## PADDLE FEATURES

### • Handle

An ergonomically designed handle for maximum comfort and control.



### • Shaft

Lightweight tapered oval shaft designed to be light, quick, stiff and comfortable with a bit of snap.

### Blades

- 7.8in / 19.8cm blade width
- 8.5in / 21.6cm blade width
- Dihedral blades incorporate a center spine and a 11 degree blade angle translating into the perfect combination of stiffness, strength, control and power.



**Paddle T**  
100% cotton jersey  
black or white



**SUP T**  
100% cotton jersey  
black or white



**Paddle H T**  
100% polyester jersey  
black or white



**Paddle Tech Shirt**  
100% polyester, lt. weight,  
quick dry, UV resistant



**Belt Pack PFD**  
Type III USGS Approved



**Backpack Dry Bag**



**Dry Bag**  
red, yellow, blue



**12' Tie Downs**



**18" & 36" Rack Pad**



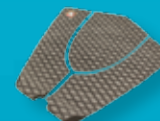
**Electric Inflatable Pump**



**SUP Leash**  
10' 9"  
8' Coiled Race



**Paddle H Trucker Hat**



**SUP Stomp Pad**  
Can replace tail piece of  
8pc Pad



**Paddle H Die Cut Stickers**  
10 pack  
black or white

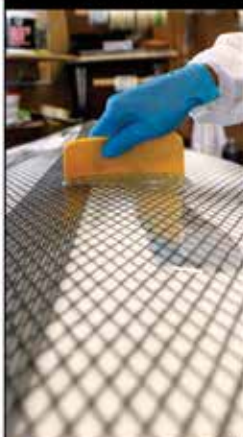


**8pc Traction Pad**



**Board Bags**  
14' - 12'6" - 12' - 11'2"  
10'4" - 9'6" - 8'6"





**Making high quality high  
performance boards is  
something we have done  
for over 62 years**

**HOBIE**  
STAND UP PADDLEBOARDS



## DISTRIBUTORS

USA & GLOBAL  
Hobie stand up paddleboards  
E: [sup@hobie.com](mailto:sup@hobie.com)  
T: (888)hobie-21  
T: (949)240-5105  
[www.hobie.com](http://www.hobie.com)

EUROPE  
Double V  
E: [contact@sunshort.com](mailto:contact@sunshort.com)  
T: +33 (0)6 29 12 36 46  
[www.sunshort.com](http://www.sunshort.com)

AUSTRALIA & S. PACIFIC  
Hobie Cat Australasia  
E: [sales@hobiesup.com.au](mailto:sales@hobiesup.com.au)  
T: +61(0)244418400  
[www.hobiesup.com.au](http://www.hobiesup.com.au)

BRAZIL  
RocketSports Ltda.  
E: [alex@rocketsports.com.br](mailto:alex@rocketsports.com.br)  
T: +55 11 99106-9696